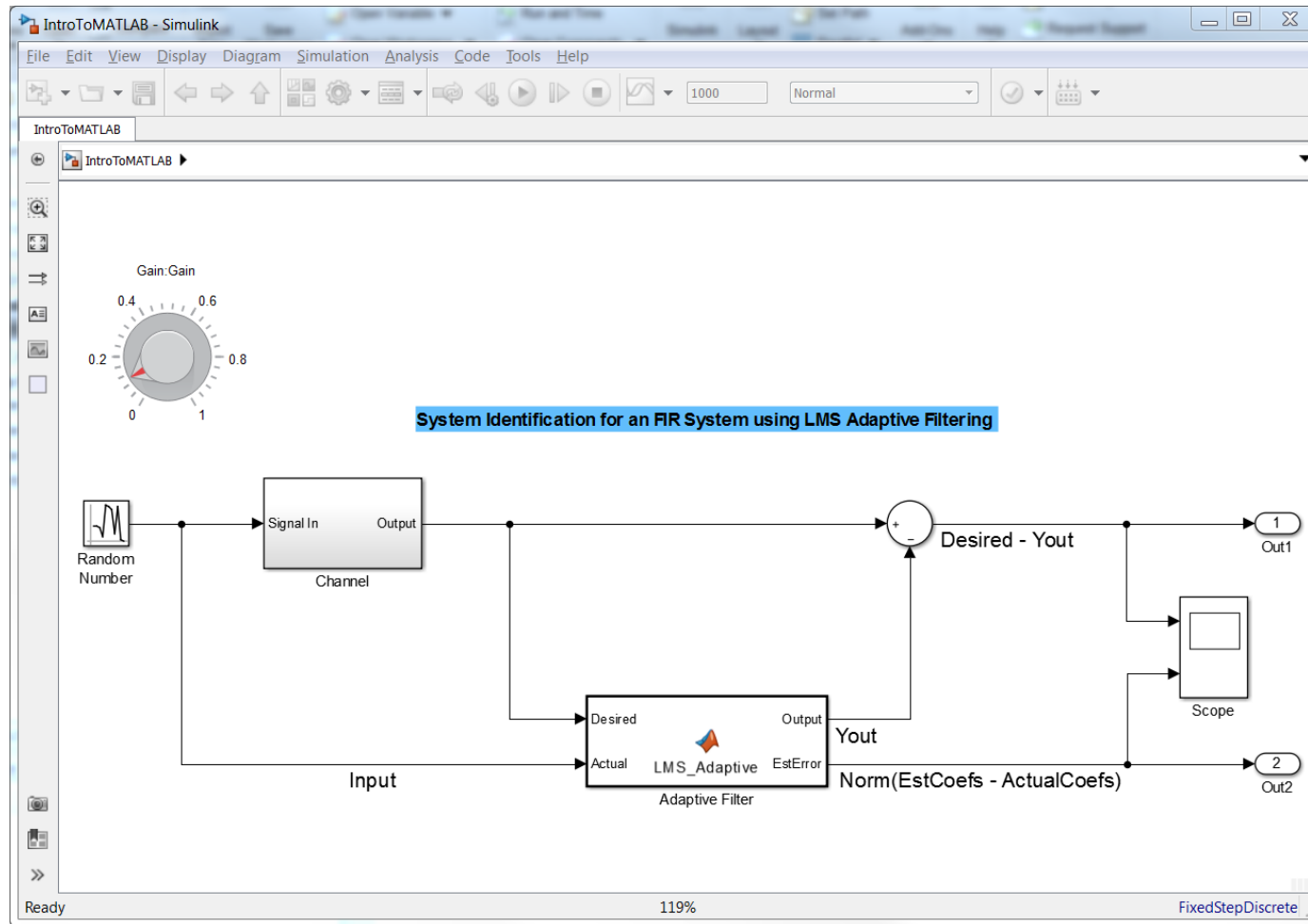


Introduction to Simulink for MATLAB Users

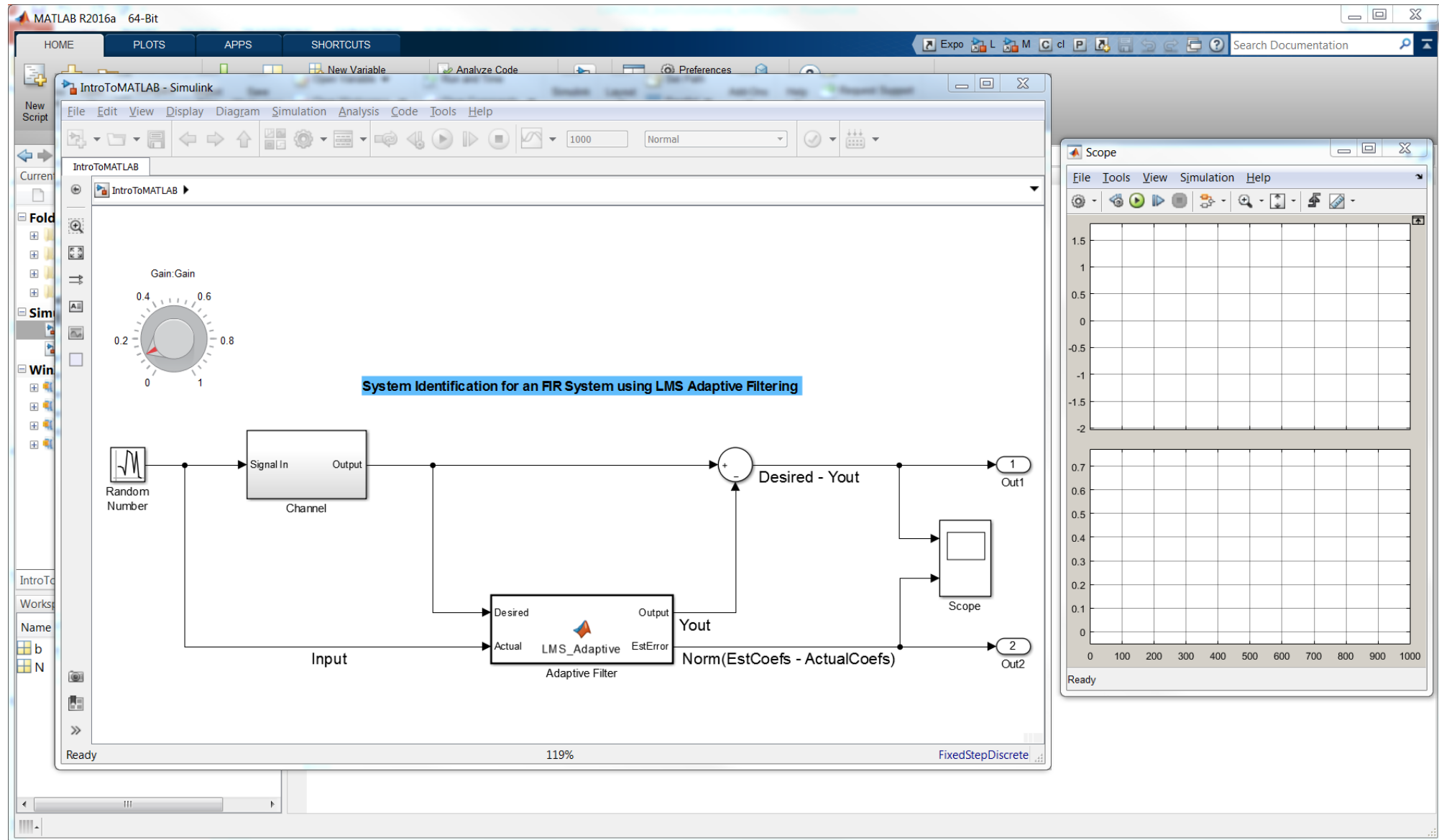
Magnus Jung
Application Engineer

What is Simulink?

Simulink is:



Simulink is:



Why use Simulink?

Why use Simulink?

System Simulation

Why use Simulink?

Solver

System Simulation

Why use Simulink?

Solver

System Simulation

**Interactive testing
and visualization**

HOME PLOTS APPS SHORTCUTS

Expo L M C cl P Search Documentation

New Script New Open Compare Import Data Save Workspace New Variable Open Variable Clear Workspace Analyze Code Run and Time Clear Commands Simulink Layout Preferences Set Path Parallel Add-Ons Help Community Request Support

FILE VARIABLE CODE SIMULINK ENVIRONMENT RESOURCES

C:\> Projects > Internal > EXPO2016 > IntroToSLForMLUsers > MATLAB

Current Folder

Name ^

- Folder
 - drafts
 - present
 - slprj
- Simulink Model
 - IntroToMATLAB.slx
 - sf_car_expo.slx**
- WinZip File
 - DemoModels_20160418.zip
 - DemoModels_20160418_2.zip
 - DemoModels_20160418_3.zip
 - IntroToMATLAB_20160414.zip

sf_car_expo.slx (Simulink Model)

Workspace

Name ^	Value
--------	-------

Command Window

```
fx >> |
```

Use Simulink for:

Solver

System Simulation

**Interactive testing
and visualization**

Learn more!

Questions?

Thanks!